



Welcome!

Thank you for joining. We will begin shortly.

Please tell us in the chat where you are joining from.



Telehealth Workflows

Give Your Support Staff the Tools to Succeed

January 2023



Amanda Karalia, MHA

Sr. Telemedicine Success Manager

amanda.karalia@doxy.me



Beju Shah, PharmD, MBA

Sr. Telemedicine Success Manager

beju.shah@doxy.me



Get the Most out of *Your* Webinar



Default = Mute

- ▶ All participants are muted by default



Stay Present

- ▶ Close unnecessary windows
- ▶ Answer polling questions
- ▶ Download the handout



Ask Questions

- ▶ Type your questions into the **chat**

We Listened to Your Feedback...



1. Utilizing Consent Forms
2. Transfer Feature
3. Setting up Shared Rooms
4. Patient Invites to Specific Room

Today's Focus

1 Features used to create efficient telehealth workflows
-Simulate the in-person patient experience

2 Utilizing Support Staff

3 [Example Workflows](#)



Highlighted Features

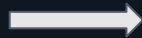
- [Shared Room](#)
- [My Room Access](#)
- [Patient Invite to Shared Room](#)
- [Patient Queue](#)
- [Teleconsent](#)
- [Patient Transfer](#)

Example Workflow

Check-In
(Shared Room)



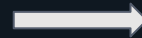
Gather demographics, insurance info, photo ID, etc.



Medical Assistant



Gather preliminary information, review medications, obtain consent, etc.



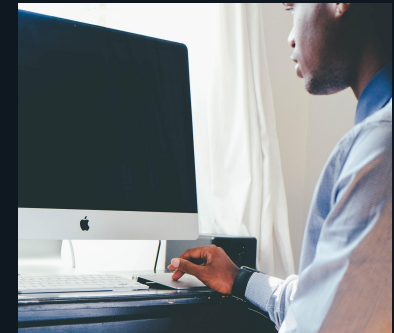
Provider



Conduct visit



Check-Out
(Shared Room)



Schedule follow-up visit, diagnostics, or lab tests

Example Workflow

Check-In
(Shared Room)



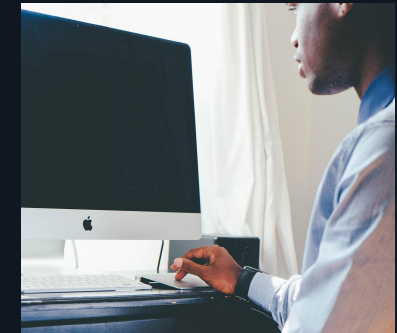
Nurse Triage
(Shared Room)



Provider Pool
(Shared Room)



Check-Out
(Shared Room)



Gather demographics, insurance info, photo ID, etc.

Gather preliminary information/symptoms, review medications, etc.

First available provider starts visit with patient

Schedule follow-up visit, diagnostics, or lab tests

NOW AVAILABLE

Doxy.me is now available in EPIC's Connection Hub!

- Launch doxy.me directly from EPIC
- Sync patient call data directly to the patient's chart

Let us know if you are interested in this [integration](#).

New products:

- [Dokbot.io](#): Patient data collection tool.
- [Adhere.ly](#): Mental health/therapy tools.



Ask Us Anything.

Q&A



Stay Connected With Us...

Amanda Karalia - [Connect with me on LinkedIn](#) 

Beju Shah - [Connect with me on LinkedIn](#) 

Your feedback helps us do better, for you. [Take our survey!](#)



Thank You for Attending Today.

